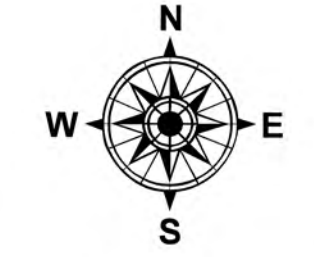


Operations

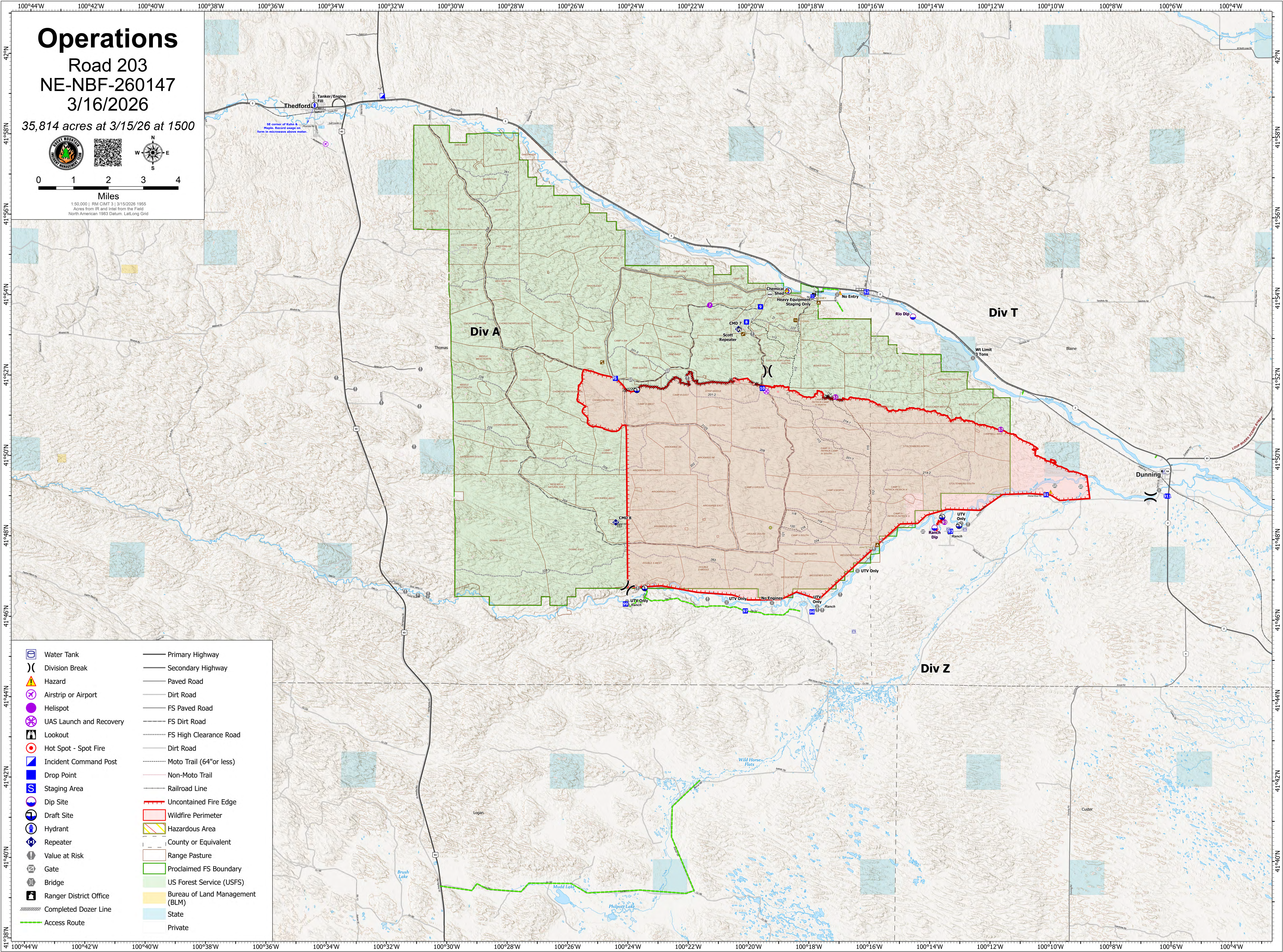
Road 203
NE-NBF-260147
3/16/2026

35,814 acres at 3/15/26 at 1500



0 1 2 3 4
Miles

1:50,000 | RM CMT 3 | 3/15/2026 1955
Acres from IR and Inval from the Field
North American 1983 Datum, Lat/Long Grid



- | | | | |
|--|-------------------------|--|---------------------------------|
| | Water Tank | | Primary Highway |
| | Division Break | | Secondary Highway |
| | Hazard | | Paved Road |
| | Airstrip or Airport | | Dirt Road |
| | Helispot | | FS Paved Road |
| | UAS Launch and Recovery | | FS Dirt Road |
| | Lookout | | FS High Clearance Road |
| | Hot Spot - Spot Fire | | Dirt Road |
| | Incident Command Post | | Moto Trail (64" or less) |
| | Drop Point | | Non-Moto Trail |
| | Staging Area | | Railroad Line |
| | Dip Site | | Uncontained Fire Edge |
| | Draft Site | | Wildfire Perimeter |
| | Hydrant | | Hazardous Area |
| | Repeater | | County or Equivalent |
| | Value at Risk | | Range Pasture |
| | Gate | | Proclaimed FS Boundary |
| | Bridge | | US Forest Service (USFS) |
| | Ranger District Office | | Bureau of Land Management (BLM) |
| | Completed Dozer Line | | State |
| | Access Route | | Private |